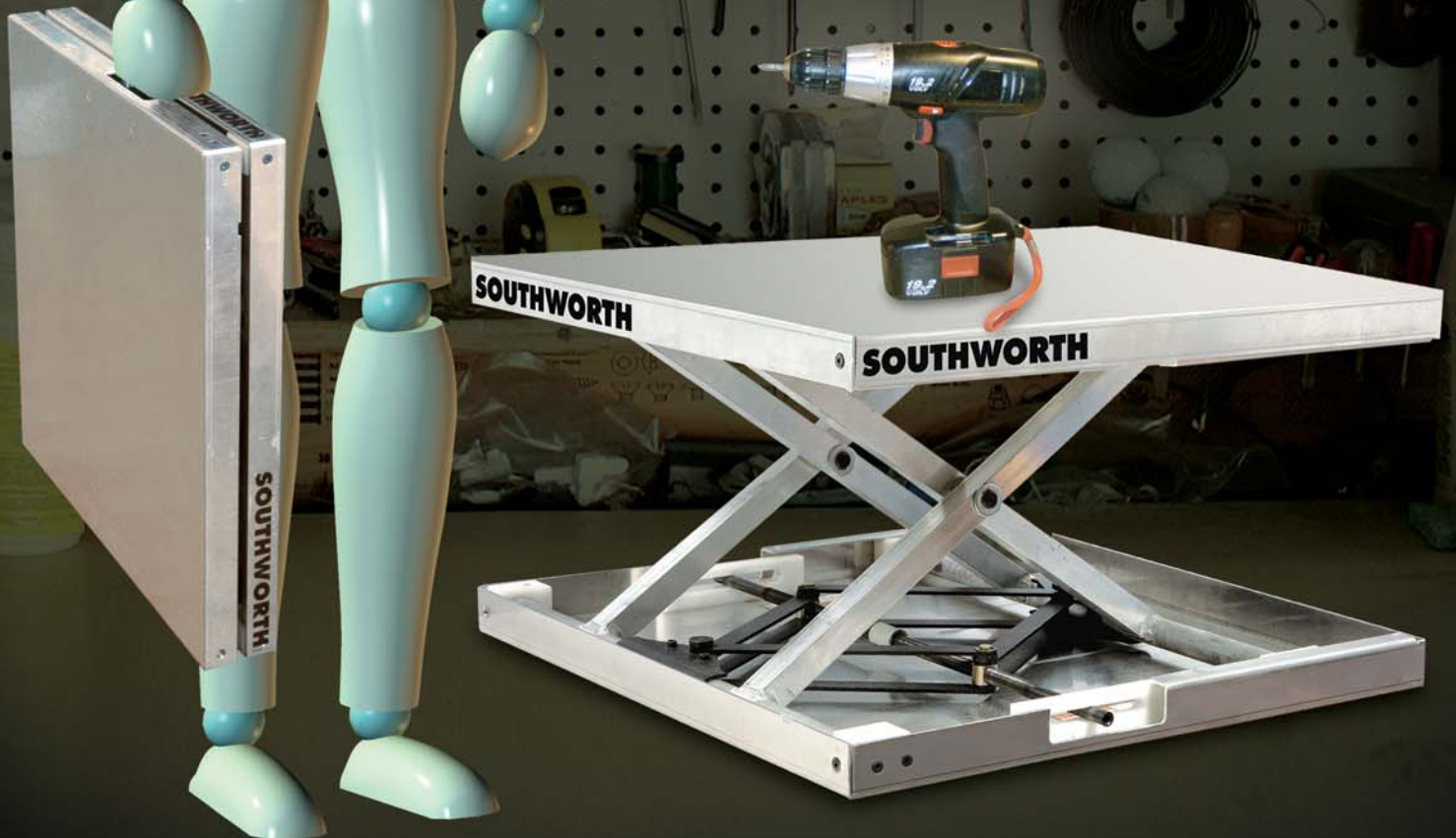


# **LIFT- TOOL™**

- *Multi-Purpose*
- *Portable*
- *No Power Required*
- *Patented*
- *Lifting, Positioning,  
and Assembly Tool*



# Lift-Tool™ ... The Go Anywhere, Do Anything Tool That No Workbench, Service Van, or Maintenance Cart Should Be Without

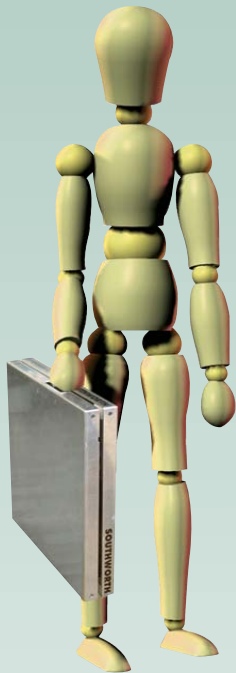
The Lift-Tool™ is like having a personal assistant with you at all times. Whenever you need an extra pair of hands to lift, hold or position something for you, the Lift-Tool is the answer. It's lightweight, so it can go anywhere you go. It's rugged, so it helps you with those big jobs where you really need it. And, all you need to lift and lower it is a cordless drill, so you don't have to worry about getting tangled up in electrical cords or air hoses.

## Features:

- Durable, proven, screw jack design
- Works with any cordless drill
- Lift loads up to 300 lbs.
- Lightweight and portable for use anywhere



Patent Numbers  
6,929,250, 7,055,802, 7,188,824



## Lightweight...

At a mere 32 lbs., the Lift-Tool is easy to carry and weighs less than most ordinary tool boxes.



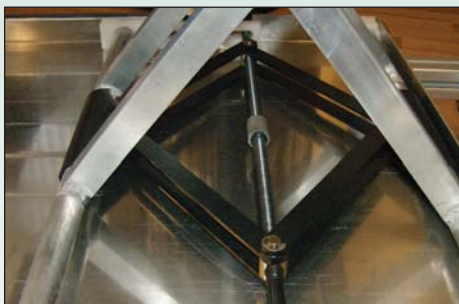
## Strong...

Lift and lower a variety of loads up to 300 lbs. with ease.



## No Power Required...

A cordless drill is all you need to lift and lower loads, so you can use it indoors, outdoors, anywhere.



## Rugged...

Proven precision screw jack mechanism will lift and lower loads smoothly with minimal wear and tear.



## Versatile...

ABS Plastic Cover can be placed over the Lift-Tool to protect delicate work or underneath it to protect work surfaces.



## Configurable...

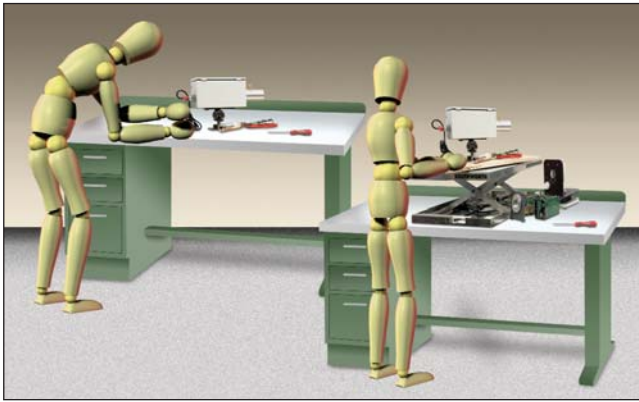
A slotted top allows for the use of straps, fixtures, and workholders to securely fasten loads to the platform.

[www.Lift-Tool.com](http://www.Lift-Tool.com)



# Use it Anywhere...

## At Workbenches...



Workbenches are great for lots of uses. But sometimes, they can be uncomfortable to work at because users must bend, stoop, or contort to access work. Lift-Tool can lift, lower, and position any work to the ideal level, making work faster, safer, and easier.



Studies prove that allowing workers to change positions increases productivity. A Lift-Tool allows them to sit or stand while keeping the work at an ideal and comfortable height.



Not all workers are the same size. A Lift-Tool allows your smallest employee and your largest employee to share a fixed height workbench.

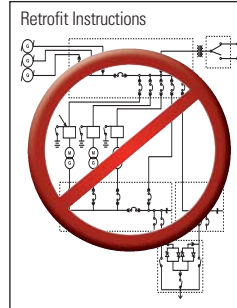
## The Best Alternative to Variable Height Workbenches...



Manually adjustable benches require too much hand cranking, so workers rarely adjust them.



Power-adjustable benches can cost several times more than non-adjustable benches.



Retrofit kits are also expensive and require complicated permanent installation.

## One Lift-Tool Can Serve Multiple Workbenches...



It's called the Lift-Tool for a reason. It truly is a tool, and like any tool, it can be shared. Because it's not in continuous use, one Lift-Tool can service multiple workbenches making it an extremely economical alternative to variable height workbenches.

## In Service Vans...



Originally designed for field use, a Lift-Tool often lets one worker perform jobs that once required two. The result is lower labor costs and improved productivity.

*That's why there are thousands of Lift-Tools in service.*

## At Construction Sites...



Waiting around for an extra pair of hands is frustrating and grinds productivity to a halt. Having a Lift-Tool on site keeps the work going and eliminates costly "waiting around" time.

## On Maintenance Carts...

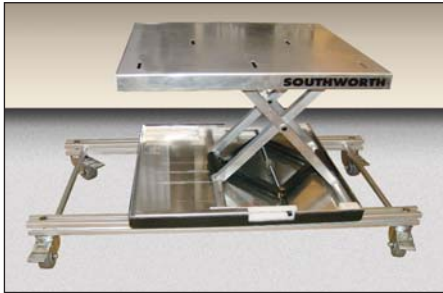


There are literally hundreds of maintenance applications for the Lift-Tool. Keep one hung on the side of a maintenance cart and be ready for any situation where you need to lift, position, or hold things in place – it is the extra hands.

# Specifications...

Capacity	Lowered Height	Raised Height	Platform Size	Weight
300 lbs.	3½"	17¾"	22" x 23"	32 lbs.

# Options and Accessories...



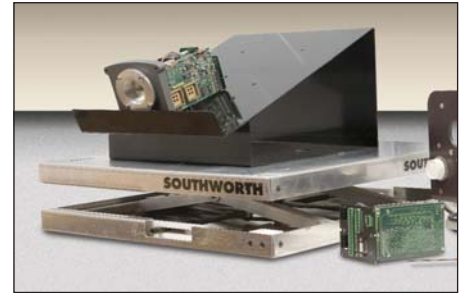
### Adjustable Straddle Frame

Designed to support the Lift-Tool in applications where placing directly on a surface would not be possible. Typical uses include cabinet and appliance installation over ranges, sinks, etc.



### Turntable

Can be mounted on top of Lift-Tool allowing work to be rotated for ease of access or underneath the Lift-Tool allowing the entire unit to spin.



### Assembly Easel

Presents and positions work at 25° allowing more comfortable access. Can be mounted to turntable.

# Other Lift-Tool Uses...

There's never been such a versatile tool. Every day, Lift-Tool owners find new and interesting ways to use the Lift-Tool to make work faster, safer, and easier. Here are just a few.

- Electronics Assembly
- Quality Control/Inspection
- Packaging
- Finishing
- Bulky Installation
- Crafts and Hobbies
- and Many More



Repair Shops



Garages and Workshops



Craft Studios

# Other Lifting and Positioning Products from Southworth...



Southworth is the world's largest manufacturer of vertical lifting and positioning equipment. In addition to the Lift-Tool, we manufacture a wide variety of hydraulic and pneumatic lift tables in both stationary and portable designs. No matter what you need to lift, transport, or position, Southworth has a product that's just right for you.

Southworth Products Corp • TEL: (800) 743-1000 • (207) 787-0700 • FAX: (207) 797-4734  
[www.Lift-Tool.com](http://www.Lift-Tool.com) • email: [Lift-Tool@SouthworthProducts.com](mailto:Lift-Tool@SouthworthProducts.com)

# **SOUTHWORTH**

PO Box 1380  
 Portland, ME 04104-1380